

COMIDOR v5.9

PRODUCT RELEASE NOTES



JUNE 2020

TABLE OF CONTENTS

New in this Release

1. General

a. UX Improvements in all Comidor units.....	1
b. User Desktop.....	2
c. Accounts Unit.....	2
d. Opportunities Unit	3
e. Personnel Unit	3

2. Workflows

a. Convert Data.....	4
b. Sentiment Analysis.....	5
c. Predictive Models.....	6
d. Document Analyser.....	7

3. App Builder

a. Table Applications.....	8
b. Report Applications.....	9
c. Import Data.....	9
d. Print and Export	10

Improvements in this Release

1. Enterprise Architecture Improvements.....	11
2. App Builder Improvements.....	12
3. Workflow Improvements.....	12

NEW IN THIS RELEASE

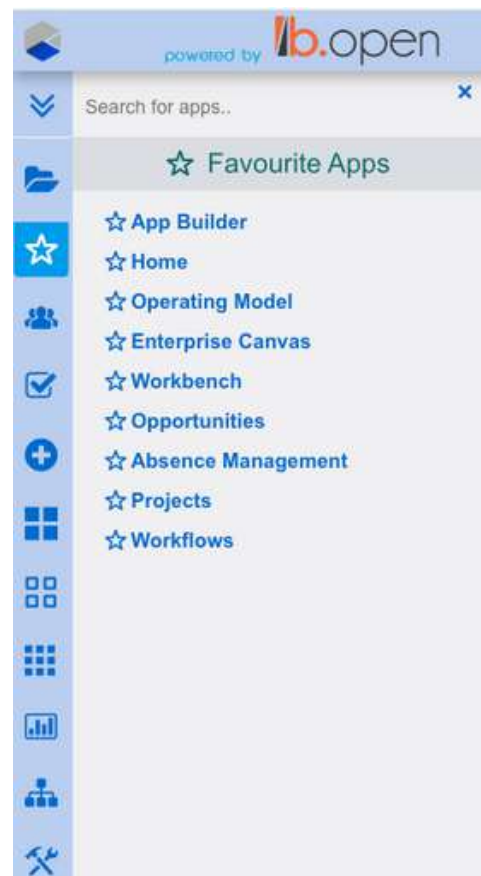
GENERAL

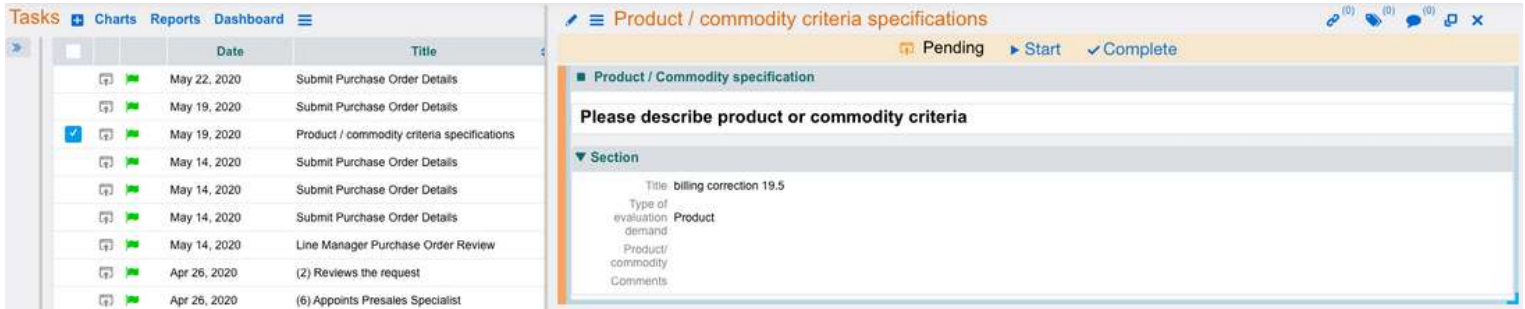
UX IMPROVEMENTS

We are excited to share with you our new and redesigned Comidor v5.9. We have improved the user experience (U.X.) focusing on the subtle details that made Comidor a whole new experience.

The main search menu has been configured in a way that makes user navigation around the different modules and features even easier and more straightforward than it was in v5.8.

- **New Menu.** All Units within Comidor have been re-grouped.
- **Search for apps.** Search for the unit you are interested in inside the main menu. This will automatically display only related results and will direct you in the modules that include the respective unit. This is an easier way of navigation.
- **Opened Units.** Opened records are grouped by opened Unit. Every record can be closed without closing the Unit.
- **Favorites.** Pin the mostly used Units for quick access.
- **Split screen.** Preview every record, adjust the size of the preview window, hide sections in tables/records.
- **Tasks.** Button differentiation for starting and completing a task.
- **Organizational Chart.** Confirmation before deleting a group. Verify that you want to delete a group and all its dependent groups.

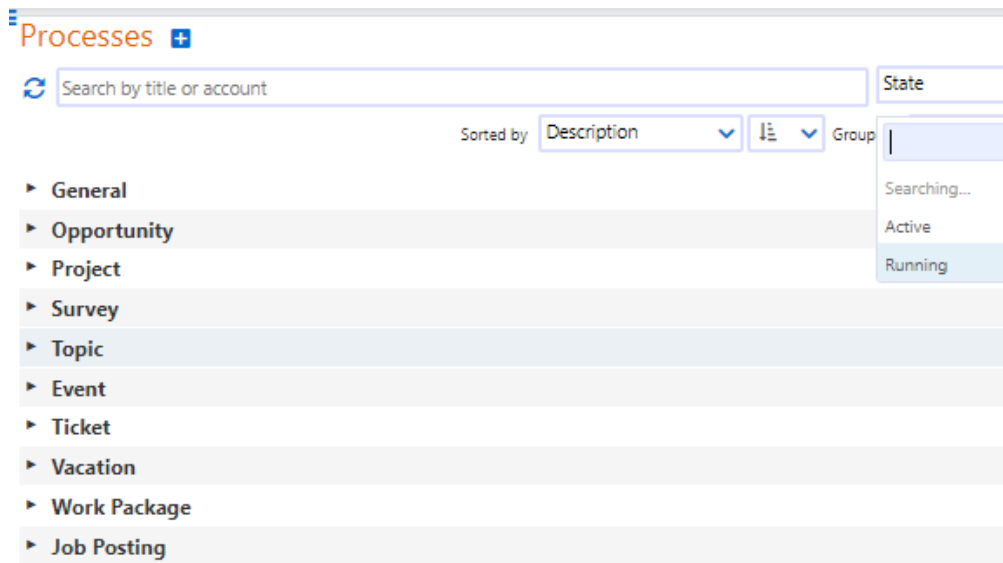




USER DESKTOP

Filter processes in Workbench according to their state.

“Running” option has been added in the state filters for better and easier process monitoring.



ACCOUNTS UNIT

Comidor v5.9 allows you to view contract information within every Account. The respective feature allows for easier monitoring of sales activities.

The Contract information fields that are displayed automatically in Accounts include:

- Title: Name of the contract entry.
- Valid from/to: Time period during which the contract is valid.
- Value: Exact value of the contract.
- Contract: Whether there is a contract in place or not.
- Active: State of the contract (Active or not Active) based on the validity period set.

OPPORTUNITIES UNIT

Comidor v5.9 allows you to get valuable insights and monitor the progress of any opportunity in the relevant Unit by adding more information:

New contact information fields added:

- Last Contact Date
- Contact Person

Title	Started at	Account	Contact	Last Contact Date
New Partnership	08-Mar-2020	Britling Co	Alfie Boyle ...	27-May-2020
New Sales Contract f...	13-Jan-2020	cUSTOMER 2	Clarice Boo...	21-May-2020
New partnership op...	08-Jul-2019	Comidor LTD	Dayna Nat...	15-May-2020

PERSONNEL UNIT

Comidor v5.9 provides more information fields in the Personnel tab. In particular, the below have been added:

Work History: provides insights on the work completed by the employee

Bank Accounts: provides details on the employee's bank accounts

Right to work from/to: indicates the time period during which the employee is given permission to work

Bradford factor: formula used to apply a weight factor on employee's unplanned absences (e.g. sick leaves, emergence absence, etc.). The higher the factor the bigger the absence's impact.

Basic Info

First Name: Alexandra
 Last Name: Birnie
 Account: ABC
 Job Title: BA Business Analyst
 Status: Active
 Branch: [Add skills]
 Department: [Add skills]
 Resource Manager: Richard Newton
 Manager: Charlie Marr
 Region Code: Germany
 Speciality: [Add skills]
 Category: [Add skills]
 Education: [Add skills]
 Job activity: Aligning the business strategies of a company with its technology
 Job group: IT
 Service: BA Business Analyst
 Functional Group: Europe
 Division: Germany
 Contractual office: Frankfurt
 Office: Frankfurt

Employment/Working assignment

Adjusted Hire Date: Jan 1, 2017
 Withdrawal Date: [Add skills]
 Contract start date: Jan 1, 2017
 Contract end date: [Add skills]
 Length of Service: 3.42 years

Vacation info

Entitlement 2020 Total / Current: 60.04 / 48.52
 Days taken: 0.00

Sickness info

Entitlement 2020 Total / Current: 19.00 / 19.00
 Days taken: 0.00
 Bradford factor: 0

Working info

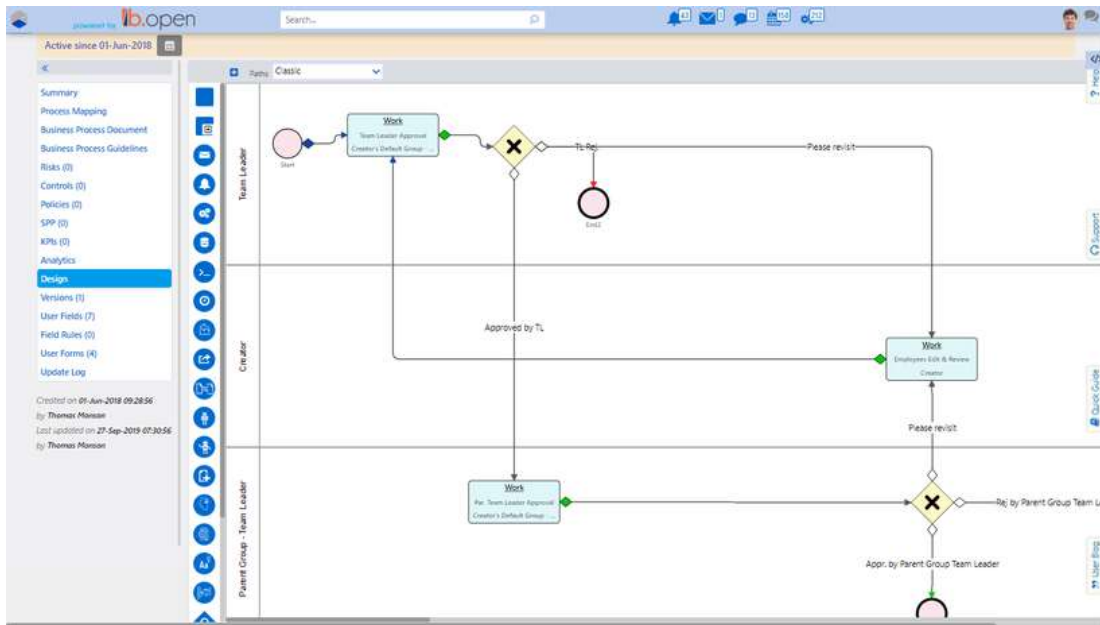
Today's Schedule: 9:00:00 AM - 1:00:00 PM and 2:00:00 PM - 6:00:00 PM

Attachments 0

Name	Updated By	Last Modified
------	------------	---------------

WORKFLOWS

Our new powerful workflow components are going to make your workflows more efficient enabling you to control and leverage your data in a better way.



CONVERT DATA

Comidor Convert Data Workflow Component enables you to convert an excel file that is stored in a binary field to a .csv format and store it to another field of the workflow.

- Efficient utilization of Existing Data
- Improved Operational Efficiency

Workflow Designer
✕

Workflow: DB Creation Workflow v1

Type: Converter

★ Title:

Parent Stage:

★ Converted Type:

★ Convert From:

★ Convert To:

Save
Cancel

AI/ML IN WORKFLOWS

Cognitive Automation is capable of performing complex tasks that require extensive human thinking and activities. Artificial Intelligence (AI) in Business Process Management is ideal in complicated situations where huge data volumes are involved and humans need to take decisions.

Comidor v5.9 now makes your workflows smart with Comidor Artificial Intelligence and Machine Learning functionalities.

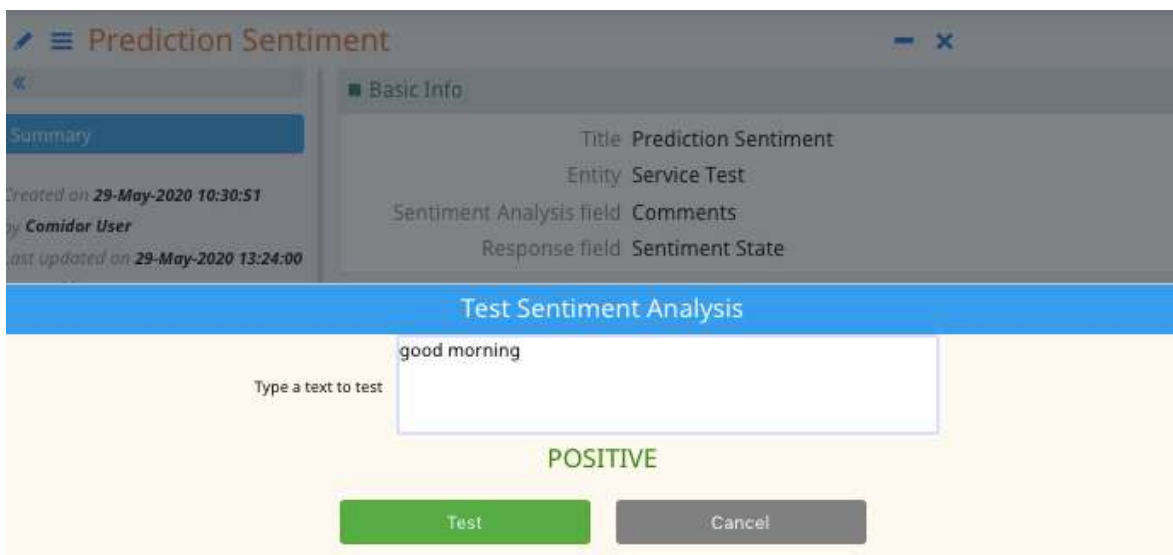
SENTIMENT ANALYSIS



Sentiment analysis is a process of text analysis and classification according to opinions, attitudes and emotions expressed by writers.

The Sentiment Analysis, enables Comidor users to understand customers' attitude, take valuable insights into a field content and handle accordingly the issues arisen. The sentiment analysis evaluates the data of a text field and detects the polarity. The result is saved to another text field and can be:

- Positive
- Negative
- Neutral



The screenshot displays the 'Prediction Sentiment' interface. On the left, there is a 'Summary' section with the following details: 'Created on 29-May-2020 10:30:51', 'by Comidor User', and 'Last updated on 29-May-2020 13:24:00'. The main area is titled 'Basic Info' and contains the following fields: 'Title Prediction Sentiment', 'Entity Service Test', 'Sentiment Analysis field Comments', and 'Response field Sentiment State'. Below this, there is a 'Test Sentiment Analysis' section with a text input field containing 'good morning'. The result 'POSITIVE' is displayed in green text below the input field. At the bottom, there are two buttons: 'Test' (green) and 'Cancel' (grey).

PREDICTIVE MODELS

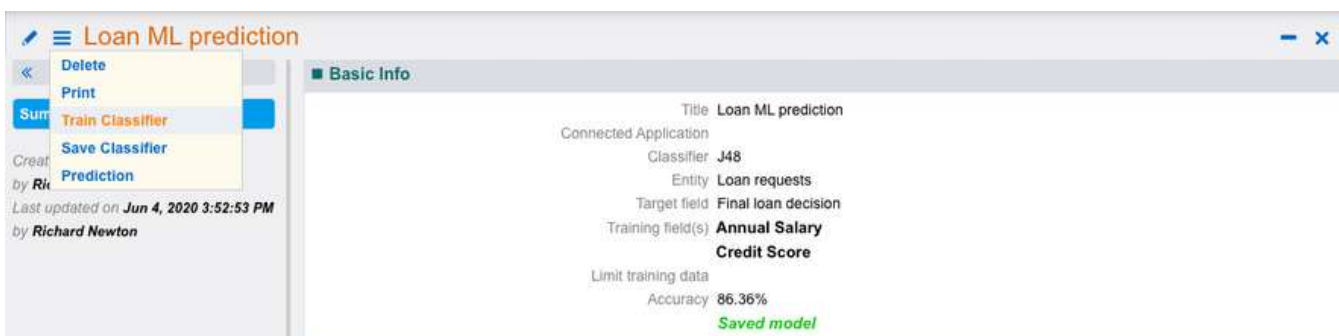


Comidor v5.9 enables users to perform predictive modeling, a process that uses data and statistics to predict outcomes with data models. These models can be used to predict anything from marketing results and venture outcomes to customer satisfaction and loyalty.

- Add a Supportive M/L component in the workflow design, to trigger an Machine Learning Predictive Model.
- Use your historical data to train Machine Learning models and get accurate predictions on specific user fields.

With Comidor Machine Learning Supportive Models:

- Enhance process automation
- Eliminate errors
- Save processing time



TEXT CLASSIFICATION

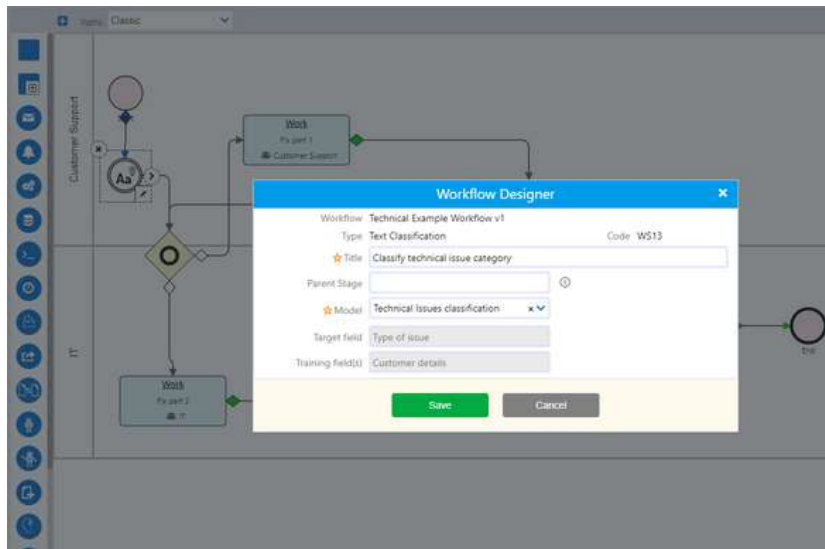


Companies can use text classification to structure business information such as customers' emails, documents, web pages, and marketing messages in a fast and cost-effective way. Comidor's Text classification functionality saves you when analyzing text data, helping you inform business decisions, and automate business processes.

- Categorize text according to its content.
- With Comidor Machine Learning Text classification assign tags or categories to text according to field content.

Comidor ML Text classification can be used for:

- Topic labeling
- Spam detection
- Intent detection



The screenshot shows the 'Technical Issues classification' model details page. The 'Basic Info' section contains the following information:

- Title: Technical Issues classification
- Connected Application: (empty)
- Entity: Technical Issues
- Target field: Type of issue
- Training field(s): Customer details
- Limit training data: (empty)
- Accuracy: 83.33333%

 A 'Summary' sidebar on the left shows creation and update details by Thomas Monson.

DOCUMENT ANALYSER

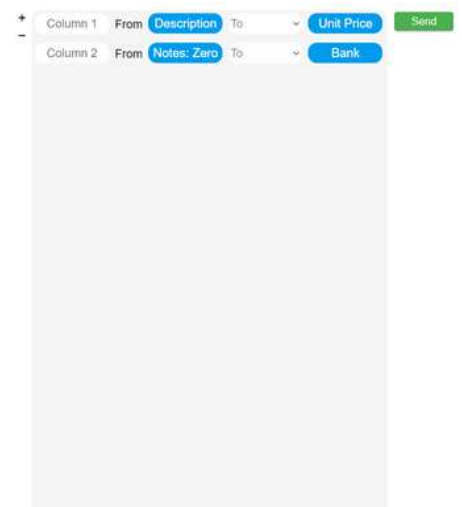


Comidor v5.9 analyzes files(pdf or images), identifies text content and extracts it partially or fully.

With Comidor Document Analyzer Models enterprises can scan documents like invoices and create digital copies. In particular, the text that is extracted from the document is saved in a text field and can be used within simple or more advanced workflows.

Use Document Analyzer Models and achieve:

- Higher Productivity by retrieving data quicker
- Cost Reduction
- High Accuracy
- Increased Storage Space
- Massively Improved Customer Service.

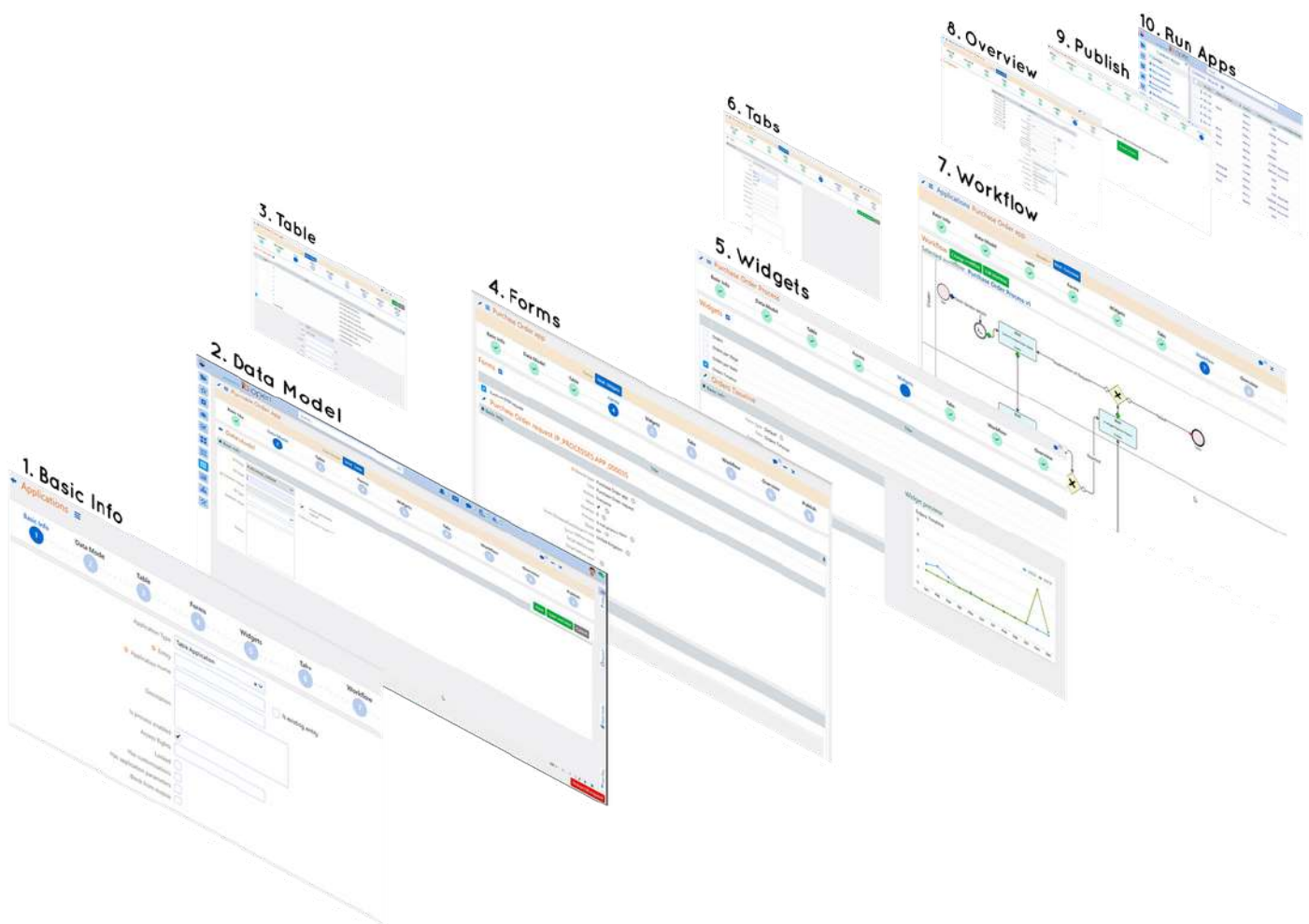


APP BUILDER

Comidor offers the ability to non-developer users to easily create their own table or report application in App Builder. With v5.9 you can begin designing your apps by defining the application type, Table Applications or Report Applications.

TABLE APPLICATIONS

The Table Application type is selected when a new application is about to be created from scratch. Create tables with lists and forms and run process-enabled or non process-enabled applications, following the 9 steps below.



REPORT APPLICATIONS

With Comidor v5.9 updated App Builder, you can create your custom Report tables without any coding. An application of this type provides a custom reporting table with all the valuable insights from other applications or units.

- Create reports for any Comidor entity you wish, like Personnel, Activities, Accounts and get access to the most important data
- Specify the fields you wish to include as searching filters of your report table
- Export or print the reporting tables

Activities report

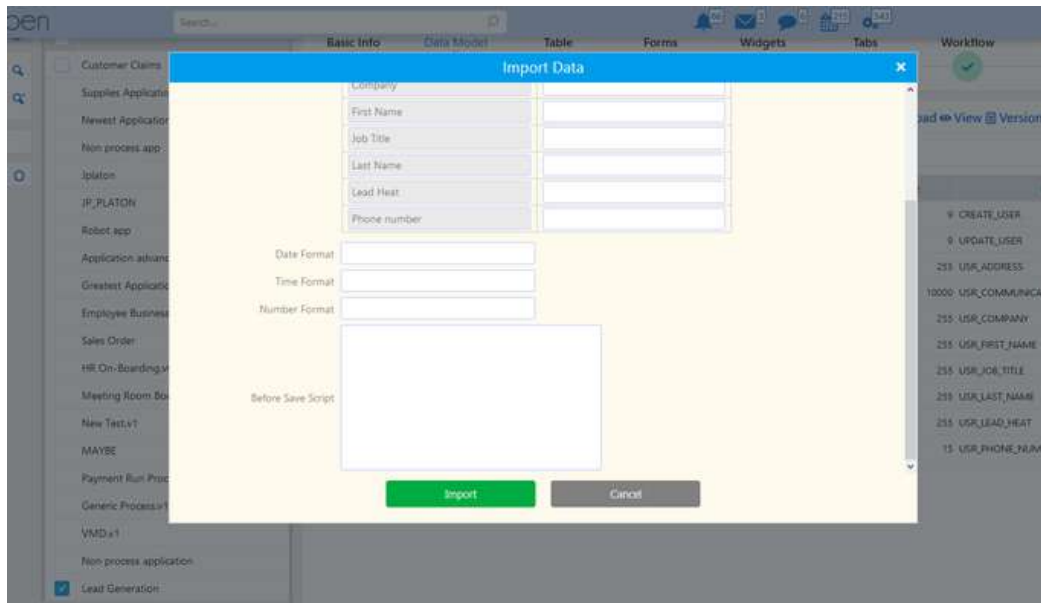
Title: State: **Completed** Assigned to: **Comidor User** Scheduled start: Scheduled end: Fetch Print Export .xls

Title	State	Activity	Assigned to	Scheduled start	Scheduled end
Exploring Comidor!	Completed		Comidor User	24-Mar-2017	24-Mar-2017
IT Meeting	Completed		Comidor User	15-May-2017	15-May-2017
Internal training on Health&Safety	Completed		Comidor User	15-May-2017	15-May-2017
All-hands Meeting	Completed		Comidor User	26-May-2017	26-May-2017
Search for air tickets	Completed		Comidor User	12-May-2017	12-May-2017
Register myself in the conference	Completed		Comidor User	15-May-2017	15-May-2017
Fix part 2	Completed		Comidor User	12-May-2017	16-May-2017
Manager Approval on a new IT Request	Completed		Comidor User	15-May-2017	16-May-2017
Start splitting up work on the new project	Completed		Comidor User	15-May-2017	15-May-2017
11/24/17 Research Phase	Completed		Comidor User	24-Nov-2017	24-Nov-2017
Contact with customer	Completed	Research market to identify new opportunities	Comidor User	25-Apr-2018	25-Apr-2018
Analysis of Requirements	Completed		Comidor User	21-May-2018	21-May-2018
Analysis of Requirements and Explanation to Devs	Completed		Comidor User	22-May-2018	22-May-2018
Conduct offer	Completed		Comidor User	26-Apr-2018	26-Apr-2018
Close deal	Completed		Comidor User	29-Apr-2018	29-Apr-2018

IMPORT DATA

This new Comidor v5.9 feature gives you the ability to make adjustments to the fields created or imported in the Application.

- Change the position of the fields used in application according to your preferences
- Adjust the format of the date, time and number fields
- Set predefined values for fields by adding a script



PRINT AND EXPORT

With Comidor v5.9 users have the ability to define whether the users can export or print the records of Applications.

- Enable the Allow Print and Export options in the App builder
- Click on the actions button of your app and choose whether you would like to print or export the data of your table

PO Number	Retail or Wholesale?	Company Name	Total Amount	Line Manager Review	Vendor Contact
PO.128	Retail	Adams Handy	19800.00	Approved	123
PO.127	Retail	Britling Co	155760.00	Approved	Mr Johnes
PO.126	Retail	Handy Supplies...	45600.00		12
PO.125		Adams Handy	0.00		
PO.124	Retail	Handy Supplies...	832.00	Approved	Mr. Jake
PO.123		Britling Co	0.00		
PO.122		Britling Co	0.00		
PO.121	Retail	Handy Supplies...	4080.00		ss
PO.120	Retail	Handy Supplies...	610.00	Approved	Mary T.

Configuration

Basic Options

- Include notes
- Include tags
- Include links
- Insert Mode
- Update Mode
- Delete Mode
- Allow user layout change
- Allow print**
- Allow export**

Data Customization

Prefix: PO.

Suffix:

Incremental No Field: Sequence No (Starting From: 0)

Level 1 Categorization: Stage

Level 2 Categorization: Account

Level 3 Categorization:

Primary Field (Record Identity): Sequence No

Ordering: Ascending

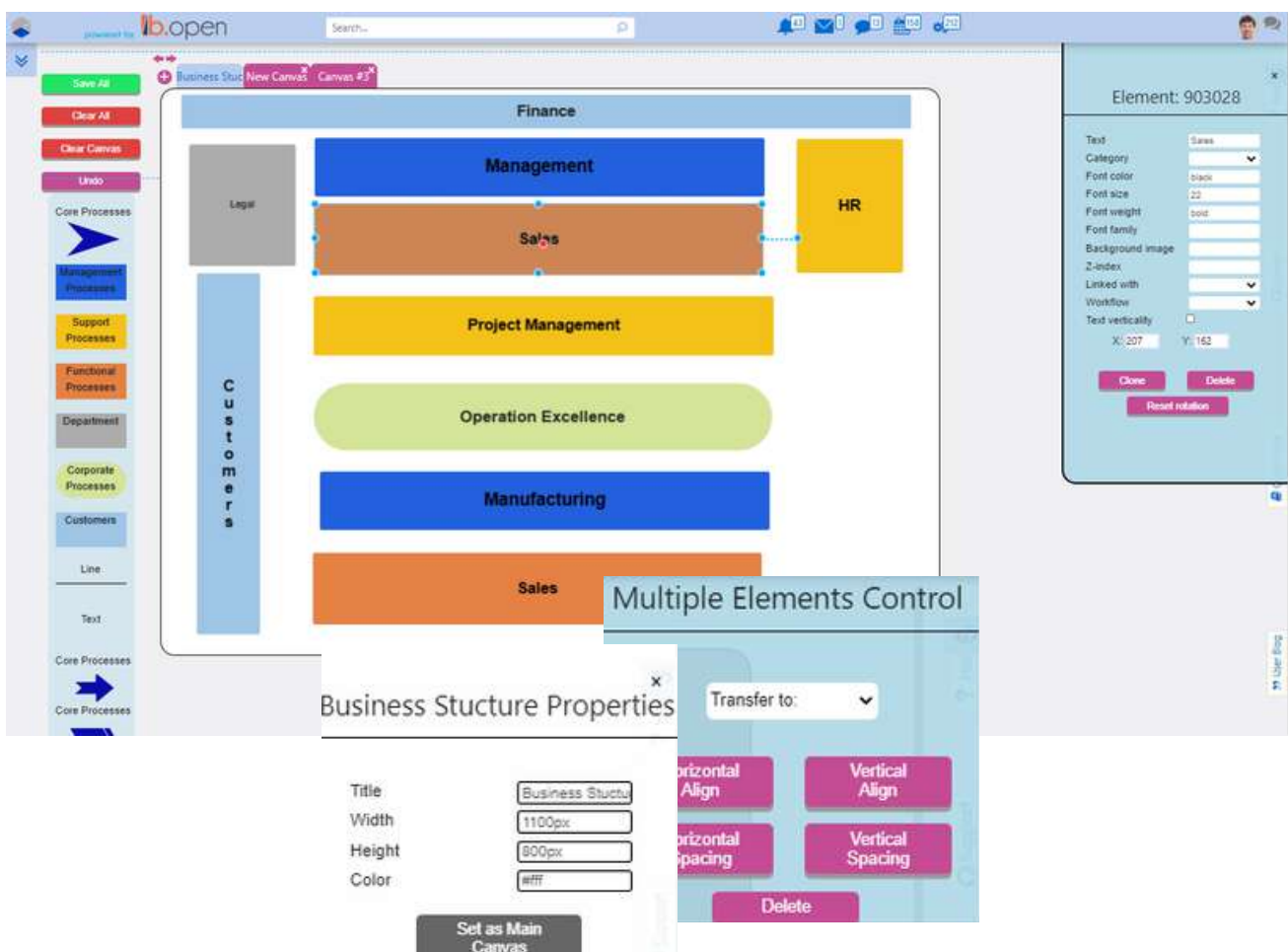
Assigned To: Retail Management, Supply Management, Wholesale Management

Send Notification To:

IMPROVEMENTS IN THIS RELEASE

ENTERPRISE ARCHITECTURE

- Link one canvas to another with the "Linked with " option of every element
- Connect an element of the canvas to a workflow
- Add a new canva with one click
- Set a canva as your main canva
- Set a background image to your element
- Rearrange the tabs of the canvas
- Clone an element and reset its rotation
- Use multiple element control (align, deletion, transfer to another canva)
- Open a document inside the operating model



APP BUILDER

- Give dynamic access rights in App records by selecting Creator/Creator's Manager in Overview step.
- Add a suffix value in the Overview step.
- Add a Sum fields 1, 2, 3 in the Overview step (applicable only in numeric fields).
- Ability to lock applications.

WORKFLOWS

- Specify Activities within Tasks.
- Add a Work Practice in Tasks and have it displayed in the business process guidelines.
- Expiration duration of the token created by workflow task email is extended from 2 to 7 days.
- Delete an already uploaded file in a binary field of a form.
- Hide sections/section titles in case the sections are empty.
- Specify the digits of a numeric field when creating the field.
- Define exchange rates and basic currency in cost calculation of workflow analytics.

FOR MORE INFORMATION PLEASE CONTACT:

Customer Success Team

 +44 (0)20 3397 8057

 customer.success@comidor.com

 www.comidor.com

Connect with us!

 [/comidor-ltd](https://www.linkedin.com/company/comidor-ltd)

 [/Comidor](https://www.facebook.com/Comidor)

 [@ComidorCloud](https://twitter.com/ComidorCloud)

 [Comidor Cloud](https://www.youtube.com/ComidorCloud)

 [/Comidor](https://www.pinterest.com/Comidor)